



**electrical engineering
services**

fabrication

**electrical &
electro-mechanical
products**

► Unit 1105 Tektite East Tower
Philippine Stock Exchange Centre
Exchange Rd., Ortigas Center, Pasig City 1605

► 5 & 7 J.P. Laurel St., Lacsamana Bldg.,
T.S.Cruz Subd., Novaliches, Quezon City

SOLGEN^{Inc}
**SOLUTIONS GENERAL IN ELECTRICAL &
ELECTRO-MECHANICAL NEEDS, Inc.**

TEL: 936-3547

FAX: 417-5671

Website: <http://www.solutionsgeneral.com>

E-mail Address: inquire@solutionsgeneral.com

Services Offered

1. *Repair and rehabilitation of electrical machines (rewinding & reconditioning, etc.)*
2. *Electrical consultation of anything*
3. *Electrical system auditing*
4. *Electrical system-rewiring*
5. *Electrical wiring of residential, commercial and industrial buildings*
6. *Electrical equipment and machine installations*
7. *Electrical design of any system*
8. *Erection and installation of electrical power substation*
9. *Erection and installation of transmission and distribution system for both overhead and underground*
10. *Erection and installation of power plants*
11. *Conduct re-engineering studies*
12. *Conduct fault calculation and studies*
13. *Installation of all types of control for electrical machines*
14. *Provide PEE and REE services*
15. *Erection and installation of any kind of pumping stations*
16. *Erection and installation of perimeter and street lighting system*
17. *Conduct study and install power factor correction devices*
18. *Conduct special studies on any electrical system upgrading or improvement*
19. *Do other electrical works as per customer requirements*
20. *Conduct special electrical testing like surge comparison test, high pot, IPF and others*

Fabrication Capabilities

1. *MCC- Motor Control Center*
2. *Panelboards*
3. *Switchboards*
4. *Raceways*
5. *Enclosures*

Products Handled

1. *Power Transformers*
2. *Distribution Transformers, dry type & oil immersed*
3. *Pole line materials*
4. *Prime and stand-by generators*
5. *Surge arresters*
6. *Power circuit breakers*
7. *Molded case circuit breakers*
8. *Electronic control gear for fluorescent fixtures*

Mission

To serve humanity in the field of Electrical and Electro-Mechanical Engineering and provide SOLUTIONS GENERAL on their Electro-Mechanical NEEDS and problems. All done at the highest level of professionalism and satisfaction, with the most reasonable pricing.

Vision

To be the best option in providing SOLUTIONS, generally and specifically on all the Electro-Mechanical NEEDS of people, corporations and institutions.

Why Choose SOLGEN, Inc.?

- A. We care & help customers, not simply by providing quality work, but also by giving "free consultation" on all electrical concerns. Our VP is a licensed Professional Electrical Engr. & Board Exam First Placer. He authored "Electrical Engineering Reviewers" on (1) D.C. Machine, (2) A.C. Machine, (3) Electrical Equipment (4) Power Generator System Design, and (5) Transmission & Distribution of Power.*
- B. We have a very strong management team, headed by our President who is a USA trained management and financial expert and President of two other companies in the Contracting & Telecom Industries. We have the best engineers and consistent workers coming up with innovations and methodologies to reach our two goals, i.e.*
 - 1.) *QUALITY WORK* and 2.) *ON-TIME DELIVERY.*
- C. We continuously improve and upgrade our tools, testers and facilities. We have also invented our own tester not readily available in the Philippines to serve our customers better.*
- D. Our Customers are given PEE certified Electrical Drawings, Safety Reports and Certification on Safety of Electrical Installations, on all our contracted works.*

-and finally-

...because we are your SOLUTIONS GENERAL IN ELECTRICAL & ELECTRO-MECHANICAL NEEDS

contents

background	
about solgen, inc.	1
organization	
data sheet of top company officers	2
organizational structure	10
services (local / domestic)	
principal services	11
services (international)	
engineering & architectural outsourcing services	11
list of	
tools & equipment	12
plant machineries	
company vehicles	
list of customers	
international clients (outsourcing)	14
local clients / customers	14
experience (partial list of projects)	17
miscellaneous documents	24



background

about solgen, inc.

Formerly, this group is only a division of NAPAR Contracting & Allied Services, Inc. (NCAS, Inc.), which begun operating as a business organization as early as 1993.

After several years of operation, the very able President of the company, a U.S. trained management and finance expert finally decided to spin-off some of the operating divisions to become new corporations, with NCAS, Inc. as the holding or umbrella group. This is how SOLGEN, Inc. came into existence as a full bloodied company, to provide solutions general in electrical and electro-mechanical needs of any body actual or juridical.

The management team of SOLGEN, Inc. was strictly screened and selected. They are among the best in their respective trades and profession.

The person in charge of engineering and operations for example, is a Professional Electrical Engineer and a Board Exams first placer. He authored reviewers for the licensure examination of registered Electrical Engineers which are published and marketed by National Bookstore. He worked with well-known and established companies like MERALCO, Westing-House, ABB, Shell, Phil-Metal, Hazama Philippines, Air Liquide Philippines among others.

Our management office is in Ortigas Business Center and our plants are located in Quezon City.

Our company has invested a lot of money for our test instruments, tools, facilities and training of our technical workers. We also develop and invent our own tester just to make sure our work is completed with utmost satisfaction on the part of our customers.

We are the trend setter on quality electrical works and our competitors, sometimes, consult with us for jobs too complicated for them to handle.

SOLGEN, Inc. is a one-stop shop do all establishment for all your electrical and electro-mechanical needs.



organization

data sheet of top company officers



NORMAN C. LACSAMANA
President and C.E.O.

Educational Background:

BS ACCOUNTING / BS MATHEMATICS
University of the Philippines
St. Peter's College, New Jersey, U.S.A.

Work Experiences:

- **J. WALTER THOMPSON ADVERTISING**, New York U.S.A.
Financial Controller, 1986 – 1989
- **CRYSTAL CONNECTION INC.**, New Jersey U.S.A.
Vice President, 1989 – 1993
- **NCL MARKETING INC.**, New York City, U.S.A.
President, 1989 – Present
- **NAPAR CONTRACTING AND ALLIED SERVICES, INC.**
Unit 1105, East Tower Philippine Stock Exchange Center,
Exchange Road, Ortigas Center, Pasig City.
President / C.E.O., 1993 – Present
- **SURETALK GLOBAL COMMUNICATIONS INC.**
3rd Floor, Textron Bldg., 168 Luna Mencias St., San Juan
Metro Manila
President / C.E.O., 2003 – Present



organization

data sheet of top company officers



CAMILO B. REGACHO, PEE **Vice-President and C.O.O.**

Educational Background:

1989 – 1992	FEATI University, Sta. Cruz Manila MS – Management Engineering – Deans Lister
1969 – 1973	FEATI University, Sta. Cruz, Manila B.S.E.E. - graduated with distinction <ul style="list-style-type: none">▪ consistent Dean's lister▪ finished the five year course in four years
1965 - 1969	Prep. Baguio City High School, Baguio City graduated salutatorian
1959 - 1965	Beckel Elementary School, Baguio City

Licenses:

Professional Electrical Engineer
(Board Exam First placer – 88.47%)

Registered Electrical Engineer
PRC Lic. No. 14138

Assistant Electrical Engineer
PRC Lic.No. 4418 (12th Placer)

Professional Experiences:

February 2004 – Present

SOLGEN, Inc. , Pasig City Vice President and C.O.O.

- Interface and coordinate the activities of all the operating departments of the company.
- Manages the day to day operation of the company
- Assist the President on matters related to funding and financing requirements per project undertaken by the company
- In-charge of administrative matters like personnel selection, recruitment and promulgates HR rules and regulations
- Chairs Mancom meetings
- One of the active members of the BOD.

June 1998 – January 2004

Practicing Professional Electrical Engineer

- Designing electrical system for vertical & horizontal developments
- Conducting seminars on Elect. Maintenance, Safety & other topics requested by clients.
- Provide canvassing, purchasing and importing activities to clients.
- Do installation, repair, rewiring & rehabilitation work for all kinds of electrical system.
- Provide PEE consultation services (formerly the PEE consultant of the following companies; Aloha hotel, Lagos Del Sol Resort hotel, Multivectors Ind'l Corp., Q.K. Calderon Construction, Kawasaki Motors Phils. Inc., JJEFWA Builders, Sand Rock Wells & Engineering Services, Fastract Supply and Engineering Services.)
- Provide PEE services like reviewing , signing and dry sealing electrical drawings
- Provide Project Management services
- Provide technical support in selling any kind of electrical Equipment, Instrument, Device and Machine of any brand.
- Conduct testing & commissioning of any electrical system facility
- Presently the Marketing and Seminar Director of Multivector Review & Training Center.
- Designed the VISUAL DOCKING SYSTEM OF NAIA -3 (Client-Siemens Inc.) June 1 to 30, 2001
- Director / Owner of CABRA , an Electrical Design and Consultancy firm, from Sept. 11, 1998 to present (part time)
- District Manager of Philam Plans Inc. Manila North 3, Regacho and Associates, from October, 2001 to present (part time)
- From Jan. 2004 to Jan. 2005, was the DCCD assigned consultant for the rehabilitation of Maynilad Water System Inc, Waste Water system, Lift stations, involving instrumentation and power.

September 1996 – June 1998

HAZAMA Phils Inc.,

Luisita Industrial Park II project

OPERATIONS MANAGER

Chief Electrical Engineer & concurrent Safety & Security Officer

- Supervised the construction of the 4 km., 4 lane Luisita Park Way (road leading to the 300 has. industrial estate)
- Designed the 60 MVA , 69 KV/ 34.5 KV modular power sub-station
- Coordinated with collaborating designers of the industrial estate as to the requirements of the Owner.
- Established standards to be used by locators on their Electro-mechanical, land scape, safety and waste disposal management.
- Prepared all technical papers needed for the ECC.(environment compliance certificate)
- Prepared rules & regulations to be followed by subcons and locators during the construction.
- Coordinated the activities of the different engineering trades of Hazama during construction.
- Designed the Electro- mechanical systems of the industrial estate.
- Chaired coordination meetings of sub-cons and Hazama engineers
- Prepared evaluation result of all subcon proposals and tenders.
- Prepared the overall construction schedules and methodologies of the project.
- Coordinated with Government Agencies for permits and clearances.
- Established in-house cost estimates for the different project components.
- Executed other works as assigned by the project manager.

April 1996 – September 1996

AIR LIQUIDE Phils Inc

PROJECT MANAGER (Project duration)

- Prepared construction schedules for the Pasig Separation plant, FTI pipeline, Pasig Refill Station and FTI administration building.
- Conducted bidding for the different works to be done on the above projects
- Liaised with government agencies for permits & clearances
- Coordinated with designers on the different projects for design inputs
- Chaired coordination meetings of different contractors
- Prepared progress reports on project status
- Evaluated material samples prior to their installations
- Did other jobs assigned by the Executive vice President

January 1996 – April 1996 (4 mos. Contract)

**P.A.C.S/ MULTIVECTORS Ind'l Corp. Fuji Geothermal Plant
LEAD COMMISSIONING ENGINEER**

- Tested and Started-up 86 units of switchgears for 480 volts and 5 KV systems.
- Interconnected all control and power cables for the different components as per electrical drawings provided by PACS.
- Commissioned the system after the installation works has been completed.

July 1995 – December 1995

**PHILMETAL PRODUCTS CORPORATED
INSTALLATION MANAGER**

- Oversaw 50 roofing and decking projects at any given time
- Assigned projects to corresponding area in-charges (w/ ranks of Asst. Mngrs)
- Acted upon on the material/logistics requirement of every project
- Managed the day to day operation of the installation Department consisting of 2 asst. managers, 4 supervisors and 20 engineers.
- Regular member of the OPCOM
- Attended coordination meeting of contractors/suppliers of big projects
- Screened and accredited installation sub-contractors
- Represented the company in the contract signing with sub-contractors
- Responsible for all accountable papers emanating from the installation dept.
- Conducted departmental meeting twice a week for collating all problems to be solved or elevated to OPCOM

February – June 1995

**ROBLETTE INTERNATIONAL CONS. CORP
ELECTRICAL PROJECT MANAGER**

- Managed the installation of the electrical system of the Procter and Gamble Whisper Plant at LISP Cabuyao, Laguna with ROBLETT INT'L CONST. CORP. As their subcon.

June 1994 – June 1995

**INTERFACE INDUSTRIAL CORP.
ENGINEERING AND PROJECT MANAGER**

- In-charged of planning & actual implementation of electrical system projects handled by the company
- Controlled and monitored flow of logistics (money , materials and manpower) for every project
- Attended coordination meetings for every projects
- Assessed and evaluated accomplishments in every project for billing purposes
- Coordinated and prepared costings needed for change orders in a project.
- Organized the correct trades of men needed for a project

- In-charged of classifying & recommending employees for promotion or salary adjustment
- Administered preparation of contracts for project workers
- Reviewed and approved payroll for project workers
- In-charged of the day to day operation of the Engg. & Projects Department
- Reported directly to the EVP/GM.

Projects handled while at **INTERFACE**

- Amtrust- Enchanted Kingdom's 18.8 KV underground distribution & Low voltage system----- Php 30 M
- Integrated Micro Devices Inc.- Installation of factory electrical system located at Laguna Technopark ----- Php 20 M
- Yutaka Inc. - Installation of factory electrical system located at Laguna Technopark ----- Php 14.5 M
- IndoPhil Inc. - Marilao Bulacan, Installed 2 Wartsilla Diesel generator sets rated 2.5 MVA each -----Php 6.5 M
- Woodside Homes - Hemady St. cor. E. Rodriguez Ave. owned by Ayala Land Installed 34.5 KV over head distribution system Php. 21 M
- A.R. Packaging - Cainta Metro Manila, Installed factory electrical system, tested and commissioned----- Php 15 M
- Uniwide Coastal City- Designed and installed the complete distribution system ----- - Php 100 M

June 1986 – March 1995

FEATI UNIVERSITY

PROFESSOR

Subjects handled:

- Power Plant Design
- Transmission and distribution line design
- Electrical Equipment
- Electrical System Design
- Electrical Machineries (DC & AC)
- Review Class

1993 – 1999

ACES REVIEW CENTER

PART TIME MARKETING AND SEMINAR DIRECTOR

- Conducted special lectures during sat. /sun only.
- Conducted promotional and campaign seminars
- Conducted seminars on different topics to enrolled reviewees

December 3, 1983 – March 1985

SHELL BRUNEI

PROCESS UTILITIES ENGINEER

- In-charged of maintenance & operation of all electrical equipment and machines (including power plants) installed at the Liquid Natural Gas Plant process and utilities areas , like generators , exciters , switchgears , protective relays , controls etc.
- In-charged of training engineers and technicians on maintenance procedures and techniques.

January to December 1983

ASEA (now ABB)

SERVICE MANAGER

- In-charged of the day to day operation of the repair technology center
- Coordinated with sales dept. on their technical and engineering requirements for their effective operation.

January to December 1982

Filipinas Electrobus Consolidated

VP - OPERATIONS

- In-charge of all projects undertaken by the company from financing, down to staffing, up to turning-over of the completed projects.
- Member of EXECOM

June 1997 – January 1982

Asia Industries Inc. Electrical Division

SERVICE MANAGER

- In-charged of handling warranty claims.
- In-charged of giving technical and engineering instructions and recommendations to sales and customers.
- Supervised the day to day activities of the service engineers and technicians.

1974 – 1977

MERALCO

SYSTEM PROTECTION ENGINEER

- Conducted short circuit simulation on DC analyzer board.
- Set and operate-tested protective relays whenever changes in the system take Place.
- Conducted test on all relays installed on MERALCO substations using SR 21 Multi Amp tester.
- Conducted operation test on all substation equipment prior to energization or re-energization after maintenance work or even faults.

1973 – 1974

SEACON INC.

MAINTENANCE ENGINEER

- Was assigned as electrical maintenance engineer at ASIAN DEVELOPMENT BANK (ADB) building at Roxas Blvd. & East Avenue Hospital (formerly GSIS Hospital)

1973 – 1975 Full Timer / 1975 – 1985 Part Timer

FEATI UNIVERSITY. FACULTY MEMBER

- As full timer , handled subjects like Physics , Calculus , and Electrical Circuits
- As part timer, handled subjects like Preventive Maintenance, Machinery Foundation, Electrical Machine Design and Electrical Transients.

Patents and Publications

Reviewer on D.C. Machines

Reviewer on A.C. Machineries

Reviewer on Transmission & Distribution of Elect. Power

Reviewer on Electrical Equipment

Reviewer on Power Generation & System Design

Objective Type Reviewer for REE & RME

Resource Speakership

Power Plant Design & Work Shop - Adamson U. , Nov. 20 , 1993

Operation of Protective Relays - FEATI U. , Mar. 10 , 1989

Preventive Maintenance & Electrical Safety - CLPC Nueva Ecija , Mar. 1995

Preventive Maintenance & Electrical Safety - Bulacan State University

Preventive Maintenance & Electrical Safety - Aloha Hotel , April, 1999

Preventive Maintenance & Electrical Safety - NEUST , Feb. 19 , 2000

Electrical System Grounding - Central Colleges of the Phil. , Feb. 23 , 2000

Preventive Maintenance & Electrical Safety - Bulacan State U. , Feb. 24 , 2000

Preventive Maintenance & Electrical Safety - DHVCAT , Mar. 01 , 2000

Illumination Design - Holy Angel University, Mar. 01 , 2000

Special Elect. Engg. Topics - University of the Phil. - Mar. 03 , 2000

Preventive Maintenance & Electrical Safety - Adamson U. , Mar. 04 , 2000

Preventive Maintenance & Electrical Safety - Luzonian College , Mar. 06 , 2000

Preventive Maintenance & Electrical Safety - Uni. of Santo Tomas , Mar. 07 , 2000

Preventive Maintenance & Electrical Safety - Tarlac State University , Mar. 09 , 2000

Substation Engineering - Golden Gate College , Mar. 15 , 2000

Preventive Maintenance & Electrical Safety - U of Perpetual Help System, Mar. 16, 2000

Preventive Maintenance & Electrical Safety - University of Batangas , Mar. 18 , 2000

Substation Engineering - DMMMSU , April 03 , 2000

Special Electrical Engineering Topics , MAPUA Inst. of Technology , Feb. , 2000

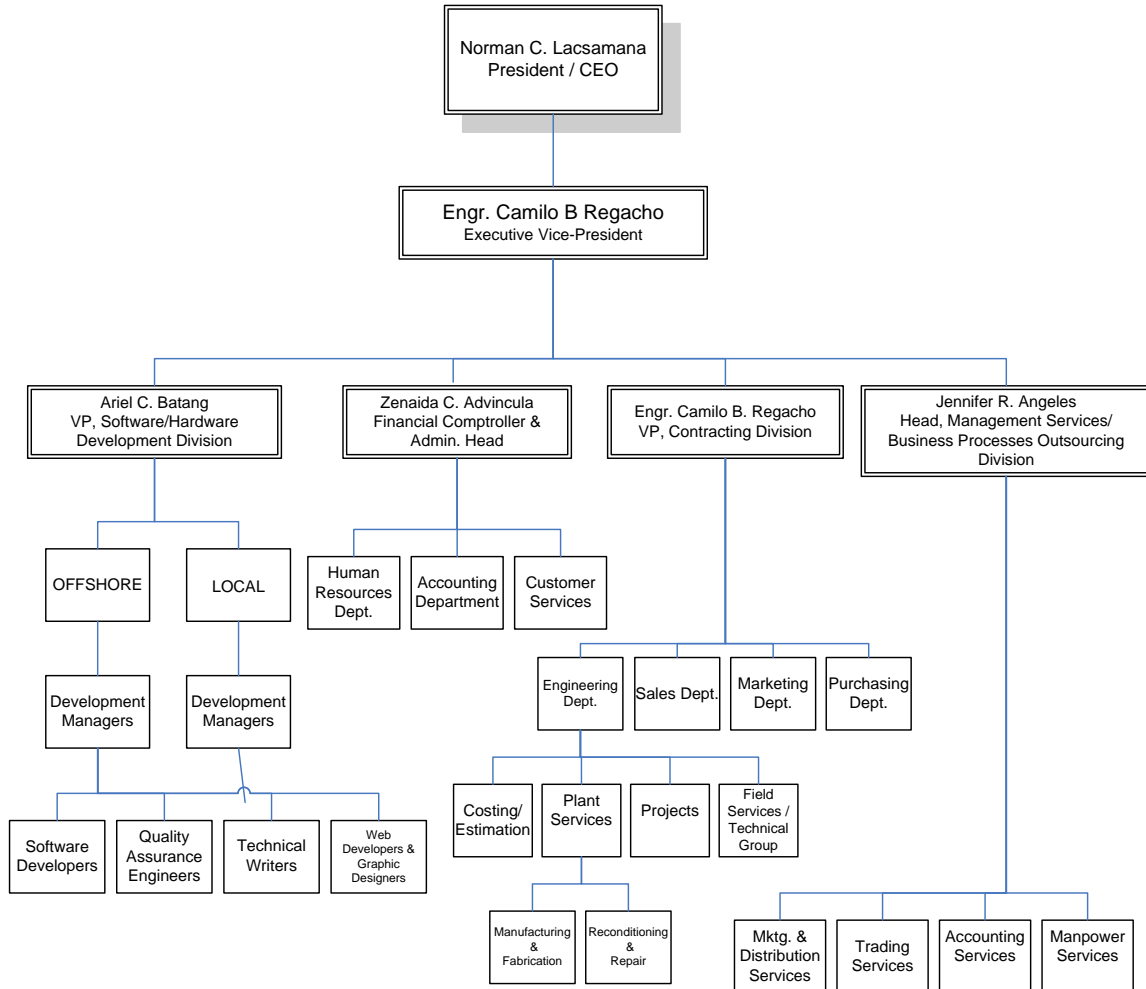
Motors & its controls - Adamson U. , Nov. 27, 1992

Substation Designing - Adamson U. , Jan.25,1997



organization

organizational structure





services (local / domestic)

principal services

Please refer to inside front cover of this profile for the detailed list of services we offer.



services (international)

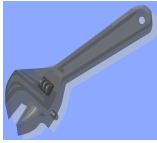
engineering & architectural outsourcing services

➤ **Drafting Only Alternative**

1. Shop/Fabrication/Erection Drawings
2. Design Drawings
 - Buildings (Architectural/ Structural/ Electrical/ Mechanical/ Sanitary/Plumbing/ Interior Design/ Landscape Architecture)
 - Site Development (Subdivisions, Industrial Parks, etc.)
 - Bridges and Interchanges
 - Highways
 - Ports and harbors
 - Airports
 - Water Supply Systems
 - Sanitary Sewer Systems
 - Flood Control and Drainage Improvement Irrigation

➤ **Design and Drafting Alternative** – we have design and drafting capabilities in the following projects:

1. Buildings
2. Site Planning
3. Bridges and Interchanges
4. Highways
5. Water Supply Systems
6. Sanitary Sewer Systems



list of tools & equipments, plant machineries & vehicles

TOOLS AND EQUIPMENT

- Shearing Machine (8ft.; 10Hp)
- Straight Bender (Manual 8ft.)
- Bender (Manual 4ft)
- Vibro Shear Electric
- Metal Bansaw Electric
- Handrills
- Knock-out Puncher (Manual)
- Hydraulic Bender/Jack (3.8T)
- Power Press (5T)
- U.S. Vice Wilton
- Hydraulic Press (5T)
- Press Drills Heavy Duty
- Medium Press Drill (1/2 Thread)
- Small Press Drill (1/4 Thread)
- Welding Machines
- Inverter
- Hydraulic Punchers
- Lifter (650kg.; Model: PL-H500-15)
- Manual Cutter
- Booms
- Bench Grinders (1/2HP)
- Forklift (2T)
- Spot Welding Machine
- Bolt Cutters
- Compressor
- Surge / DC Hi-pot Tester – Baker Brand
- Transformer Turn Ratio Test Set – Biddle Brand
- Oil Dielectric Test Sets – Hipotronics Brand
- Insulation resistance Tester – Yokogawa Brand
- Winding Resistance Tester – Hipotronics Brand
- Portable AC / DC Hi-pot Tester – Biddle Brand
- Megger 15 kV – Hipotronics Brand
- Ground Resistance Tester – Biddle Brand
- High Voltage Insulation Tester – Kyoritsu Brand
- Multi Function Tester – Fluke Brand
- Power Analyzer

- Thermographic Scanner
- Digital Camera
- AC Clamp Ammeter
- AC Voltmeter Tester
- Circuit Breaker and Relay Tester
- ATS Test Set
- Transformer Winding machine
- Steam Washer
- Coil Forming Machine
- Filter Press Machine
- Dipping Tank
- Portable Generator
- Portable Air Compressor
- Torque Wrench
- Box Wrench / Open Wrench 3 Sets
- Splicer
- Chain / Pipe Vise
- Telescopic Ladder
- Scaffoldings with accessories
- Crimping Tools
- Knock out Puncher
- Pipe Threader
- Pipe Bender
- Bus bar Grinder Machine
- Cable Bender
- Wire Grip
- Adjustable Wrench
- Open Wrench
- Safety Belts

LIST OF VEHICLES

- Boom Truck 5 Tons Capacity
- 1 unit Isuzu Forward (6 wheeler)
- 2 units Isuzu Elf (4 wheeler)
- 1 unit Kia Pregio Van
- 1 unit Isuzu Daihatsu
- 1 Unit 2000 Model Mercedes Benz C220
- 1 Unit Toyota Corolla Sedan
- 1 Unit Nissan Sentra Sedan
- 1 Unit Hyundai Getz Sedan 2000 Model
- 1 Unit Nissan Patrol 2000 Model



list of customers

international clients (outsourcing)

Checkpoint Systems, Inc.
Meto USA
Sato
USAID
Asian Development Bank
World Bank
Chiyoda Engineering Consultants, Ltd., Japan
Beca Worley International Ltd., New Zealand
Parsons Brinckerhoff International, USA
Everest International Consultants, Inc., USA

local clients / customers (partial list)

partial list of companies that we have served either through projects, preventive maintenance, equipment maintenance or supply, consultation and trainings / seminars:

A –Grade Garments Mfg. Corp.	Manila Polo Club, Inc.
ABC 5	Maxima Steel
AD Drugstel Pharma Corp	MEGACENTER Mall
ADAMAY	Metalwealth Co., Inc.
AGS Realty Corporation	Metro Still STLW.
AKRON Petrochemical Products	MLWD
Asian Terminal	Monark Equipment
AVA Fleming Laboratory	MWCI
B&D Reftronics	MWSS
Babcock Hitachi	NE Pacific Mall
Bacnotan Steel Ind. Inc.	NEP Logistics
BEST COR PHILS	Nestle Phils., Inc.
Cabanatuan Elec Corp.	Novamall
Caltex Phil	Ogami Corporation
Camanava Flood Control	Oracle Petroleum Corp

Cayuga
Central Mfg., Inc.
Champion Furn, MFG,. Inc,
Chia Tung Phils.
CLARK Industrial
Coca-Cola Bottlers, Phils. Inc.
Container Corp of Phils.
Coro Coat Indl
Cosmetiques Specialists, Inc.
CYGNUS Industries, Inc.
D&L Industries
E.E.I. Corp.
East Asia
East Ceramic Phil. Corp.
EPSON
Ever Grand Central
Everlasting Manufacturing
Fil-Am Foods
First in Cotor/D & L Industries
FUTURA Clothing Int'l. Corp.
General Metal Container Corp.of the
Philis.
Genials Tdg & Contracting
GICA Grinding Wheel Corp.
Grand Alphatech Intl
Greenshine Cardboard Corporation
H.B. Garments, Inc.
HDR Food Corporation
Hebron Engineering
HPA Ice Plant
Ibaan Electric
IFP Mfg. Corp.
INSTRUMECH Phils., Inc.
Integrated Microelectronics, Inc
Intl Container Terminal Services
ISOT Asia
Isuta Phils, Inc,
JBC Food Corp.
JEBB Enterprises & Eng'g.
July Mfg., Co., Inc.
KASUMI
Keppel

Oriental Assurance Corp
Phil Daily Inquirer
Phil Steel
Phil. Phosphate Fertilizer Corp.
Philippine Stock Exchange Center
Philips Semicon
Phils. TRC Inc.
Philstone Industrial Mfg.
PHINMA Property Holdings Co
Plastman Indl Corp.
PMR Pallet LTD. Co
PNOC-EDC
Polar Bear Storage
Power Serve Inc,
Powersource Mktg.
POZZOLANIC Phils
Premium Packaging
Premium Packaging Int'l, Inc.
Pretty Door Mfg., Corp.
PRHC Property Managers, Inc.

Puyat Steel Corp.
Quest-Air / VITALO
Republic Biscuit Corp.
RFM SWIFT
Ritzmon Mfg Corp
Robinson's
RTMSI
Sabroe Phils.
San Miguel Corporation
Sankei Phils. Inc,
Sara Lee Phils.
SGI MULTILING
Shinetsu
SKI Construction Group
SLC
Sogo Hotel
Solar Foundry Comp.
Southfields Multi Trade, Inc.
Standard Aluminum Corp.
Steel Corp. of the Phils.
Sucere Foods Corp

Kilton Motor Corporation
KLT Fruits
KOYO
La Mesa Dam
Landbank of the Philippines
LCR Laboratory
LEXBER Development
Lima City Hotel
LIMA UTILITIES
Lima Water Corp.
LLOYD Laboratory
LMG
Luzon Magnetics, Inc
Mahle Filter System Phil. Corp.
MAKRO North Harbor
MANILA CORDAGE CORP.

Sun Hing Textile
TAN CHIONG IND
Thumbs Up
TOKAI-RICA
Tosoh Polyvin Corp.
Total Corporate Network, Inc.
Toyo Construction
Transco
Tropical Fruits Asia Corp
Twinpack Container Corp.
Udocal Philippines, Inc.
UNICHEM Petroleum Products, Inc.
Unimagna Phils. Inc.
Union Carbide Phils, Inc
YTP-Lima Mfg. Inc
ZEST-O Corp.



experience (partial list of projects to show our capabilities in different areas):

company / client	scope of work
➤ Maynilad Water System, Inc thru DCCD	Design Work Services of Villamor Pumping Station with 6 – 650hp, 2.4kv pumps with 2-300hp 2.4kv suction pumps. Each motor is controlled by a 2.4kv VFD with primary reactor starter by-pass and protected by a VCB. Motors are being initiated by PLC which senses variation in water pressure.
➤ Maynilad Water System, Inc thru DCCD	Design Work Services of SUBSTATION for Villamor Pumping Station, which resulted to a single load break switch on the primary with 34.5kV potential and 2-3750 kVA, pad mounted transformers with 2.4kV secondary voltage. Primary protective devices are also VCBs and so with the secondary and tie breakers. Power circuit breakers for both primary and secondary wire well provided with protective relays like 50/5,86,87,49 and 27. DC power supply for closing and tripping the protective devices.
➤ Maynilad Water System, Inc thru DCCD	Design Work Services of the STAND-BY GENERATOR for Villamor Pumping Station consisting of 2-2000kVA, 2.4kV 3Ø with synchronizer, VCB power breakers and relays.
➤ MM Reyes Corp.. Novaliches, QC	Rehabilitation of 5 Storey commercial Building: <ul style="list-style-type: none">- Conduct Spot Testing & Polarization Index.- Reconditioning of Standby Generator.- Redesigning & Rewiring of Electrical System- Test all Circuit Breakers, 30 - 250 AT- Improve Building Illumination.
➤ Eurotel-Hotel North Edsa, QC	Complete installation and supply of Materials for the Electrical System of the 8-storey hotel with 84 rooms, 3 function halls, multiple offices and other facilities. The works include also the installation of service entrance equipment, main breaker of 2000Amps, 3ø, 2000 Amps MTS and MDP with 21 sub-feeders.
➤ Eurotel-Hotel North Edsa, QC	Complete installation and supply of materials for the auxiliary system of the hotel to include Telephone system, CATV, panic doors, CCTV, WAP, LAN, remote TV Controllers, Enercon System and Fire alarm Systems.

- Sogo Hotel, Dau Complete installation and supply of materials for the electrical system of the 4-storey drive-in and walk-in hotel with 104 rooms and other facilities. The works also include the installation of service entrance equipment, main breaker, MTS and MDP with 10 sub-feeders.
- SM N.Edsa Grass Residences Complete installation and supply of materials for the electrical system of the 9-storey Parking Building of SM Grass Residences, thru FINMAT International. The works include also the installation of service entrance equipment, main breaker of 800Amps, 800 Amps ATS and MDP with 18 sub-feeders.
- SM N.Edsa Grass Residences Complete installation and supply of materials for the auxiliary system of the 9-storey Parking Building to include Telephone system, CATV, CCTV and Access Control System, and Fire alarm Systems.
- Funeraria Novaliches Complete Installation of the electrical system of a 4-Storey Building.
- Verdantpoint Dev Corp. Supply of Labor and Materials for the construction of 30 Housing units in its Eastwood Residences projects located in Montalban, Rizal thru joint venture with Keejang Builders, Inc.
- Sogo Hotel, Monumento Complete installation and supply of materials for the electrical and auxiliary systems of additional 30 rooms.
- Villa Novaliches Resort, Laguna Electrical Wiring and installation of perimeter lighting.
- St. Matthew, Malolos Bulacan Complete installation and supply of materials for the Electrical system of a 2- Storey Building
- Ciriaca Reyes Caloocan City Complete installation and supply of materials for the Electrical system of a 4-storey building, including Project Management for the construction of the building.
- Daiwa Seiko Phils. Corp., Laguna Supply and installation of 350 KVA Indoor Substation Transformer and Install approximately 750m Underground Mounted Feeder line from Power House to Production on the receiving end.

- Philippine Stock Exchange Center Ortigas, Pasig Supply and installation of bus-tie using Unelec S6400 Amp Breakers.
- Suretalk Global Communications Erection of 2 Internet pop-sites in Novaliches and Valenzuela.
- Hon. Dante Liban Street lighting projects in different areas of Quezon City
- Hon. C. Mathay Installed and provided different lighting systems for covered courts.
- Bgy San Agustin Sub-metering of four urban poor areas with approximately 300 families for the Depressed Area Electrification Program.
- Eurotel-Hotel North Edsa, QC Supply, Fabrication and Installation of Main 2000 Amps, 2000 Amps MTS, MDP with 21 sub-feeders, and all required panelboards and ECBs.
- Sogo Hotel, Dau Supply, Fabrication and Installation of Main 1,200 Amps, 1,200 Amps MTS, MDP with 10 sub-feeders, and all required panelboards and ECBs.
- SM N. Edsa Grass Residences Supply, Fabrication and Installation of Main 800 Amps, 800amps ATS, Meter Center w/ Digital meters, 18 Distribution Panels and 5 pumps and motor panelboards.
- Nat'l Kidney & Transplant Inst Supply, Fabrication and Installation of all 380volts and 220volts Panelboard requirements, i.e. Main 1600 Amps, ATS, with 56 sub-feeders in 3 Unitized Panels.

Supply and Installation of Lightning Arresters with counters.
- LRT NORTHMALL Supply and Fabrication of Cable Trays and Panelboards & supply of Electrical Materials (such as wires and cables) for the rehabilitation of the electrical system of the 3-storey building.
- Daiwa Seiko Phils Corp., Laguna Fabrication and Installation of Unitized Panel Enclosure with 1250 Amperes ACB and 600A MCCB

- United Pulp and Paper Repair and Maintenance of various Power Transformers.
- D & L First and Color, Ortigas Fabrication and installation of enclosure with 6 units of Power Analyzer. Includes testing and commissioning.
- GSIS-HQC Preventive Maintenance of Substation, Voltage Switchgear, Load Break Switches and Oil.
- Enchanted Kingdom Laguna Inspection and Recommendation for reconditioning of Sub-station Transformer 34.5KV/480Vac & their G.E. 20 KVA Dry type Transformer.
- Bobcock Hitachi Phil. Supply and Installation of 500 KVA Dry Type Transformer.
- Bobcock Hitachi Phil. Consultation & recommendation for their substation system protection
- Land Bank of the Philippines Consultation and Recommendation on energy consumption reduction for the Govt Energy Conservation Program.
- San Miguel Corporation Study & recommendation of Electronic Governor for their 5MVA Genset.
- EEI Consultation for General Alarm and P.A. System for Plant.
- Pozzolanic Phils., Inc. Annual Preventive Maintenance of Calaca Flash Plant Electrical System.
- Air Transportation Office Servicing of 1100KW, Genset #2
- Quezon Power Ltd Co. Servicing of 500KVA Distribution Transformer.
- Quezon Power Ltd., Corp Servicing of 2 units 1500KVA / 1200KW, 480V 1804 A. , 1800rpm Generator, Magna Max Brand.

- Jo-Na's International Preventive Maintenance & Manpower
- Mitsubishi Heavy Ind. Preventive Maintenance of 1200KW, 4160V, 1800 rpm Alternator. (PAC-Canlubang, Laguna)
- Mitsubishi Heavy Ind. Preventive Maintenance of 3 units 1250 KVA, 4160V, 900 rpm Alternator (EPSON, Batangas)
- Festive Foods,Intl Preventive Maintenance & Manpower Supply.
- New CHP (Delta lighting) Preventive Maintenance & Manpower Supply.
- Mindanao Foods Corp. Preventive Maintenance & Manpower Supply.
- MD Juan Enterprises Preventive Maintenance & Manpower Supply.
- Republic Wooden Comm. Preventive Maintenance & Manpower Supply.
- EEI Conducted Quantity Surveying
 - PNOC, El- Pueblo Manila
 - Davao International Airport
 - NYK Maritime, Canlubang, Laguna
 - Ateneo Medical School
 - Mobile Hopper
 - Marinduque Tablas Power Plant
 - Interconnection line of Tablas Romblon Power Plant
 - Puerto Princessa, Palawan Pole line Power Distribution
- JG Castro Enterprises Total Reconditioning of 1250 KW, 440V Alternator.
- Ivan Rice Mill Repair old 400 KVA Denyo Genset
- Mitsubishi Heavy Ind. Reconditioning of 4 units 1350KVA, 4160V Alternator
- Fiesta World Mall Corp. Repair of 910KW, 480V Alternator.

- Hilmarc's Corporation Rehabilitation / Repair of 180 KW Kohler Genset.
- Wyeth Phil., Inc. Servicing & Reconditioning of various motors, generators and Transformers.
- Int'l Elevator Reconditioning /Overhauling of Main Alternator 1122 HP / 8018KW Continuous 1150HP/920KW standby, 440/250V, 1800rpm,
- Phil. Flour Mills Reconditioning and dynamic balancing of alternator 2000KVA,440/254V,1800rpm, 3 Phase, 60Hz Taiyo Brand.
- Nestle Phils., Inc. Rewinding /re-taping of 120KVA,480V, 400 rpm LA Mheyer Alternator.
- National Power Corp. Repair of 480KW, 7.2KV, 1792RPM, Induction Motor, Hyundai Brand.
- San Miguel Brewery Re-taping of 800HP Compressor Motor for frick motor # 8, Electrical Installation of Power for Deepwell #9
- Bussbar Corp. Rewinding of 3 units 100HP Induction Motor
- Union Cement Corporation Rewinding of various spare motors.
- M-Tec Corp./Genset On site reconditioning of 2 units 30KVA Genset.
- Coca-Cola Bottlers Phil Rewinding of 1500 KVA Transformer
- Siam Mariwasa Toto Servicing of 1500 KVA Transformer
- Liberty Commodities Repair of 110KW Hitachi Motor
- National Irrigation Admin System Reconditioning of 550 HP, 2400HP, 2400v Induction Motor
- Semirara Mining Corp. Rewinding / re-taping of 320 KW, 4160V A synchronous motor.

- Pozzolaninc Phils. Inc. Annual Preventive Maintenance of Calaca Flash Plant's Electric System.
- Sustamina Dressing Plant Complete Electrical System Auditing
- CAFCOR Feed Mill Plant Complete Electrical System Auditing
- Sustamina Hatchery Plant Complete Electrical System Auditing
- Shin-Etsu Magnetic Phil. Inc Supply and Install of 8 KVA UPS, 20 pcs. 1.5 KVA UPS
- Mitsuba Phil Corp Redesigning of lighting system to improve Energy Saving and illumination using B.A. G. ECG and ELC.
- Enchanted Kingdom Retrofitting of B.A.G. Electronic Controlled Gear in their existing 300 lighting fixtures
- Sarah Lee Phil Redesigning of lighting system to improve saving and illumination using B.A.G. ECG and ELC
- Phil Steel Redesigning of lighting system to improve saving and Illumination using B.A.G. ECG and ELC
- San Fernando Supply of Generator and installation of ATS.
- Great Eastern Hotel Supply and Installation of 1250A Molded Case Circuit Breaker.
- NCAS INC. Complete Electrical System Auditing and Installation of BAG Ballast.
- SOGO AVENIDA Partial Electrical System Auditing using Power Analyzer and Megger to test the Polarization Index
- SOGO BANAWA Troubleshooting and Partial Electrical System Audit using Power Analyzer